



IMJIN PARKWAY WIDENING & ROUNDABOUT PROJECT

Construction Activities Update: October 6 – October 24, 2025

PLEASE BE ALERT! Pay attention to the delineators marking the edge of the traveled lane. **Not all pavement areas are open to traffic. Construction work and/or equipment move into and out of areas that are closed to traffic.**

Recommended speed through roundabouts (during construction) is 15 MPH
The enforceable speed limit through the construction zone is 25 MPH

TIPS FOR DRIVING ROUNDABOUTS:

- **VEHICLES ALREADY IN THE ROUNDABOUT HAVE THE RIGHT OF WAY**
- **VEHICLES MERGING INTO THE ROUNDABOUT:**
 - **CHECK FOR PEDESTRIANS CROSSING IN THE AREA**
 - **YIELD TO VEHICLES IN THE ROUNDABOUT AND MERGE SAFELY**

What's Happening in the Next 2 Weeks (October 6 – October 24)

Day Shift

- Continue installing irrigation elements and planting landscape materials (native plants and trees).
- Continue wiring of streetlights and pedestrian rapid flashing beacon poles.
- Work by others – MGE (PG&E) to continue work on conduits and vaults for relocated/upgraded equipment. Work begins at Abrams Drive (north), crosses under Imjin Parkway and continues along Abrams Drive (south) terminating near Bunker Hill Drive.

Activities That Took Place Last Week (September 29 – October 3)

- Removed concrete barriers along Imjin Parkway at Reservation Road, Preston Drive, Abrams Drive, Marina Heights Drive, and western project limits.
- Performed patch-paving of first layer asphalt on Imjin Parkway between Reservation Road and Preston Drive; west of Preston Drive; at Marina Heights Drive; and at the western end of the project.
- Excavated for/placed concrete for new signal pole foundation at Reservation Road.
- Work by others: PG&E contractor completed directional drilling operation to install conduits for relocation/upgrade project.
- Work by others: MCWD contractor patched asphalt roadway section where work was performed on the manhole at Marina Heights Drive.

Traffic Control week of 10/6

- There are no scheduled closures.
- Expect traffic control (flagging and lane shifts) to occur the length of the project to allow work on the shoulder areas.
- Emergency access will be available at all times.

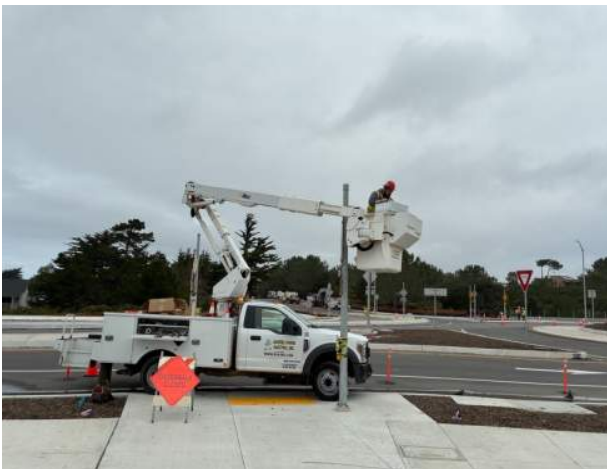


IMJIN PARKWAY WIDENING & ROUNDABOUT PROJECT

Future Construction Activity and Information: What's Planned in the Future?

- Continued coordination with PG&E for their work along Abrams Drive. PG&E will be relocating/upgrading some of their infrastructure. Their work conflicts with our construction completion at Abrams Drive (south) and the full operation of the roundabout at this location. Now that the conduits and vaults have been installed, we are anticipating a scheduled outage of approximately 12 hours in duration so that the new facilities can be tied in and activated. PG&E **has not scheduled** the outage at this time, but we anticipate that it will be later this month (October). Please keep an eye on the website for the latest information.
- Phase 4 – final paving and striping! We are hoping to begin our final paving in late October provided the weather holds and PG&E has relocated their equipment. We are moving into our fall (cooler/wetter) weather conditions which may affect our ability to perform paving and striping work. The good news is that we are tracking to beat the June 2026 completion deadline and hoping for final completion in the first quarter of 2026.

PROGRESS PHOTOS



Wiring work for rapid flashing beacon equipment at pedestrian crossings



Median streetlight foundation in the foreground.
Crew standing another streetlight in the background



IMJIN PARKWAY WIDENING & ROUNDABOUT PROJECT

PROGRESS PHOTOS

WORK SEQUENCE FOR RESERVATION ROAD SIGNAL POLE FOUNDATION



Demo sidewalk for access to drill foundation



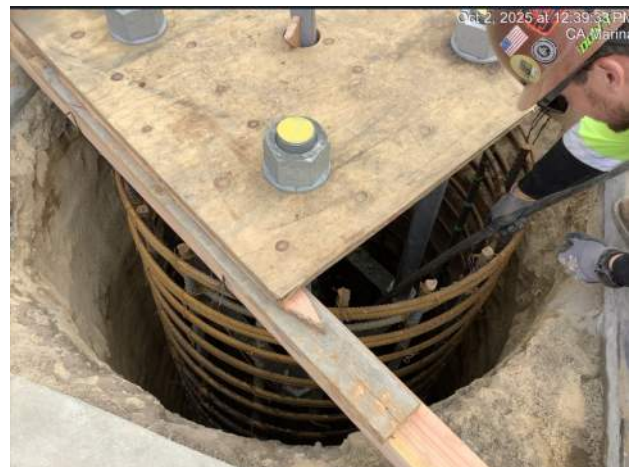
Drilled hole (4'-6" diameter, 15' deep)



Reinforcing steel cage to be lowered into drilled hole



Anchor bolts (3" diameter, 5' long) will be set inside the reinforcing steel cage



Reinforcing steel cage and anchor bolts set and ready for concrete



IMJIN PARKWAY WIDENING & ROUNDABOUT PROJECT

PROGRESS PHOTOS



Removing concrete barriers along Imjin Parkway near Reservation Road



Paving first layer of asphalt along Imjin Parkway near Reservation Road



New delivery of native plant materials



PG&E contractor off-loading one of their new equipment vaults

How to Stay Informed

- Please visit the project website at www.imjinparkway.com or contact Edrie De Los Santos (City of Marina) at 831.884.1212
- **For access to the Christina Williams Memorial** please contact:
 - Conner Schivo (MPE) 831-277-0137 OR
 - Michaelle Mowrey (City) 831-884-1212

Thank you for your patience and for observing safety speed limits!