

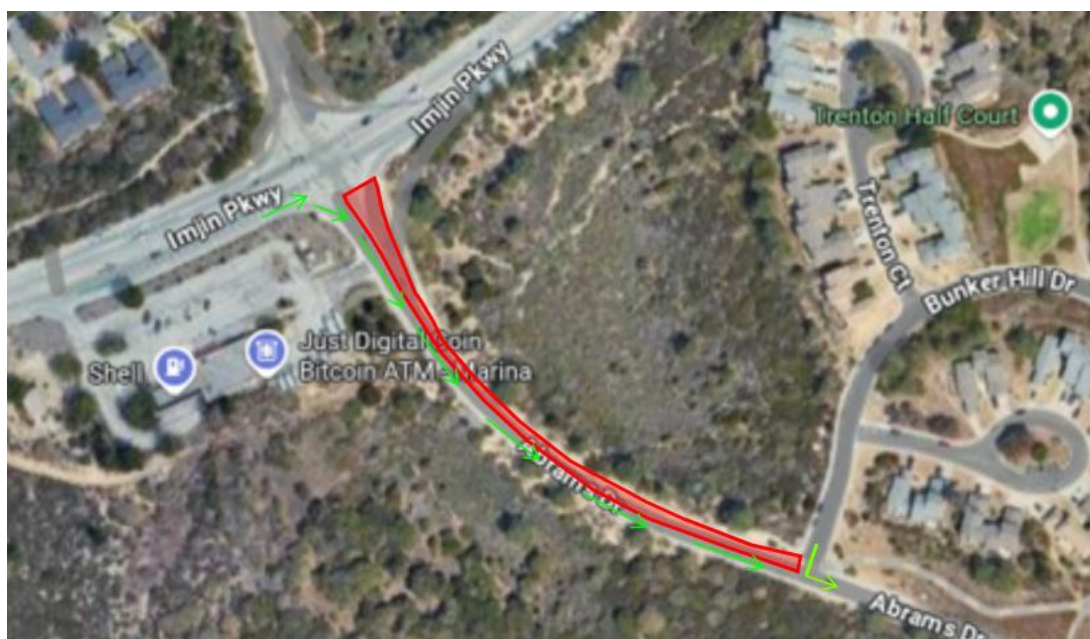


IMJIN PARKWAY WIDENING & ROUNDABOUT PROJECT

TRAFFIC UPDATE

DAY CLOSURES THE WEEK OF 9/15/2025

9/15 thru 9/17 (Monday thru Wednesday) from 8:00AM - 4:00PM – Abrams Drive (south) between Bunker Hill and Imjin Parkway will be closed in the “uphill” (northbound) direction. Access to the food & fuel mart will be available from Imjin Parkway and in the “downhill” (southbound) direction on Abrams Drive (south).



EMERGENCY VEHICLE ACCESS WILL BE AVAILABLE AT ALL TIMES

This closure is required to facilitate PG&E work/improvements. The work performed will include removal/relocation of conflicting vaults in Abrams Drive (south).



IMJIN PARKWAY WIDENING & ROUNDABOUT PROJECT

9/18 (Thursday) 9:00AM - 4:00PM – Westbound Imjin Parkway will be closed from Reservation Road thru Abrams Drive (north). Detours will be in place for California Avenue.

Eastbound Imjin Parkway will be open but there will be no access to Abrams Drive (north) or Preston Drive.

There will be right turn in/right turn out access to Imjin Parkway in the eastbound direction.



EMERGENCY VEHICLE ACCESS WILL BE AVAILABLE AT ALL TIMES

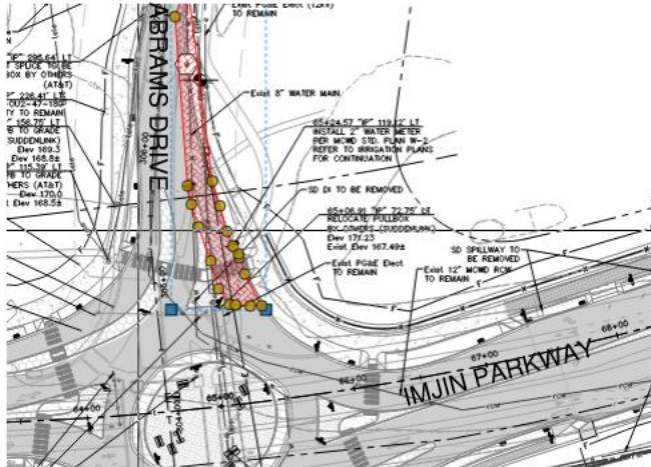
The work performed will include potholing existing utilities for upcoming underground work that will upgrade electrical infrastructure that services CSUMB (and others).

Our contractor is working to maximize efficiency by scheduling activities that can be performed during these closures to minimize additional traffic shutdowns. Their work will include removing some concrete barriers and installing remaining streetlights (at Abrams Drive).



IMJIN PARKWAY WIDENING & ROUNDABOUT PROJECT

9/19 (Friday) from 8:00AM - 4:00PM – closure of northbound lane of Abrams Drive (north).



EMERGENCY ACCESS CAN BE PROVIDED BY FLAGGER

The work performed will include potholing existing utilities for upcoming underground work that will upgrade electrical infrastructure that services CSUMB (and others).