



IMJIN PARKWAY WIDENING & ROUNDABOUT PROJECT

Construction Activities Update: September 1 – September 12, 2025

PLEASE BE ALERT!

Recommended speed through roundabouts (during construction) is 15 MPH

The enforceable speed limit through the construction zone is 25 MPH

ON WEDNESDAY (9/3) THE NORTHBOUND LANE OF ABRAMS DRIVE (SOUTH) WILL BE CLOSED between Bunker Hill Drive and Imjin Parkway from approximately 9:00 AM UNTIL 1:00PM to facilitate PG&E work (see attached Notice).

TIPS FOR DRIVING ROUNDABOUTS:

- **VEHICLES ALREADY IN THE ROUNDABOUT HAVE THE RIGHT OF WAY**
- **VEHICLES MERGING INTO THE ROUNDABOUT:**
 - **CHECK FOR PEDESTRIANS CROSSING IN THE AREA**
 - **YIELD TO VEHICLES IN THE ROUNDABOUT AND MERGE SAFELY**

What's Happening in the Next 2 Weeks (September 1 – September 12)

Day Shift

- Form and place concrete for median curbs, sidewalk, and curb & gutter on Imjin Parkway near Reservation Road and Preston Drive.
- Begin construction of left-turn pocket section (on Imjin Parkway) for Shell station access.
- Continue installation street light foundations/poles and complete wiring for pedestrian crossings.
- Continue installing irrigation elements and planting landscape materials (native plants and trees).

Activities That Took Place Last Week (August 25 – August 29)

- Ground/removed temporary pavement at/near Reservation Road, Preston Drive, Abrams Drive (north) and Marina Heights Drive.
- Rough graded and surveyed locations for remaining median curbs, sidewalk, and curb & gutter layouts on Imjin Parkway at Reservation Road and Preston Drive.
- Continued electrical work for streetlights and pedestrian crossings.
- Continued installing irrigation materials and native plants in landscape areas between Preston Drive and Abrams Drive.
- Installed erosion control measures (waddles) on side slopes near Marian Heights Drive.

Future Construction Activity and Information: What's Planned in the Future?

- Continue coordination with PG&E for their work at Abrams Drive (south). PG&E has plans to relocate some equipment that conflicts with our construction at Abrams Drive (south) and the operation of the roundabout at this location. The schedule for this work is driving our schedule for the completion of Abrams Drive.
- Completion of Phase 3 work and moving into the final phase (Phase 4) which will be final paving and striping! We do not know the schedule for this next milestone as we do not have a work schedule from PG&E and we will be moving into our fall weather patterns. We are definitely tracking to beat the June 2026 completion deadline, but unable to predict what the actual date will be at this time.



IMJIN PARKWAY WIDENING & ROUNDABOUT PROJECT

PROGRESS PHOTOS



Grinding and removing temporary pavement near Reservation Road (left) and Abrams Drive (right)



Near Reservation Road



Preston Drive



Marina Heights Drive

Rough grading of areas where temporary pavement was removed



IMJIN PARKWAY WIDENING & ROUNDABOUT PROJECT

PROGRESS PHOTOS



Crews installing "waddles" (polymer mesh "tubes" filled with straw that are staked into the slope) as part of the erosion control measures



Tree and native plants near Preston Drive

How to Stay Informed

- Please visit the project website at www.imjinparkway.com or contact Edrie De Los Santos (City of Marina) at 831.884.1212
- **For access to the Christina Williams Memorial** please contact:
 - Conner Schivo (MPE) 831-277-0137 OR
 - Michaelle Mowrey (City) 831-884-1212

Thank you for your patience and for observing safety speed limits!



IMJIN PARKWAY WIDENING & ROUNDABOUT PROJECT

TRAFFIC UPDATE

ABRAMS DRIVE PARTIAL CLOSURE

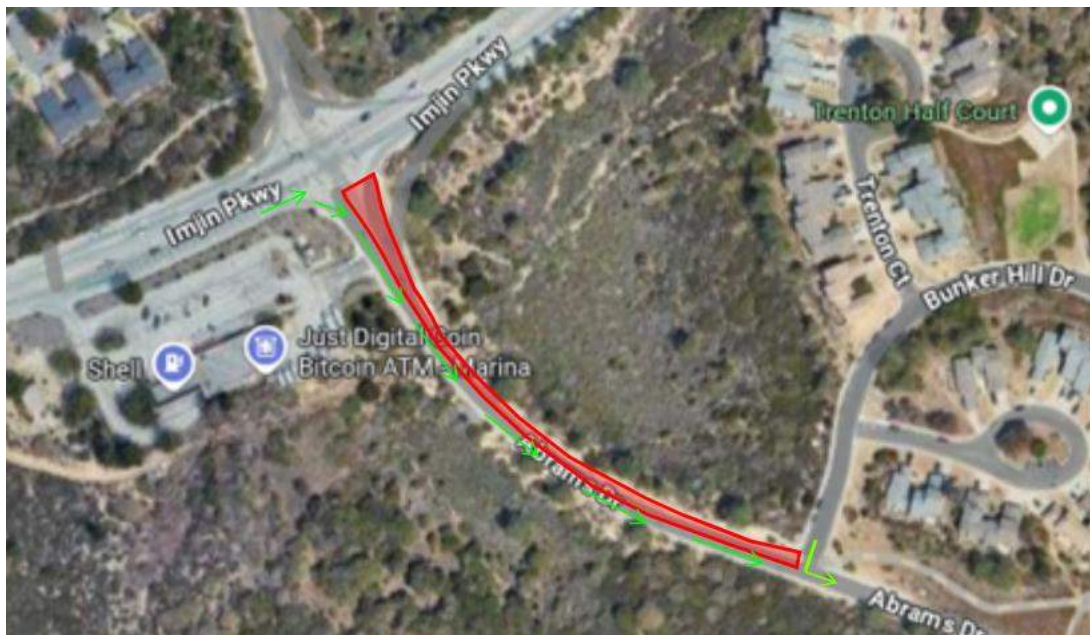
Wednesday, September 3, 2025

To facilitate PG&E work, Abrams Drive northbound (heading uphill toward Preston Park) will be closed from Bunker Hill Drive to Imjin Parkway on 9/3/2025 from approximately 9:00AM to 1:00PM.

THIS WILL BE A HARD CLOSURE – ACCESS WILL NOT BE AVAILABLE TO EMERGENCY RESPONDERS DURING THIS CLOSURE.

During the closure, crews will be preparing a large underground vault for future demolition.

In addition, there will be work at the Chapin yard driveway and along Abrams Drive (south) near Bunker Hill Drive. This work will not require roadway closure but will be done in the shoulder areas.



Red area = closed

Green arrows = open to traffic