



## **IMJIN PARKWAY WIDENING & ROUNDABOUT PROJECT**

---

**Construction Activities Update: May 26 – June 6, 2025**

**PLEASE BE ALERT!**

**Traffic control is in place for your safety!**

**Recommended speed through roundabouts (during construction) is 15 MPH**

**The enforceable speed limit through the construction zone is 25 MPH**

- **Abrams Drive (north) and Imjin Road are closed at Imjin Parkway until 5/30**
- **Imjin Pkwy to Reservation Road – one right turn lane is closed**
- **MST Bus stop #2007 (East bound Reservation Road just past Imjim Parkway) will be closed from 5/27 through 6/3.**

---

### **What's Happening in the Next 2 Weeks (May 26 – June 6)**

#### **Day Shift**

- Complete construction of new driveway (on Imjin Parkway) at Shell Station.
- Continue earthwork/grading and base rock for south side Imjin Parkway roadway section from Preston Drive ½ roundabout to Reservation Road.
- Continue work forming and placing concrete for the ½ roundabout (south side) at Preston Avenue.
- Construct new curb and ADA ramps at Imjin Parkway/Reservation Road (southeast corner).
- Install revised striping and transition traffic between Preston Drive and Abrams Drive (north) to transition traffic to north roadbed (scheduled for the night of 5/29). This will coincide with re-opening Abrams Drive (north) to right-in/right-out traffic movements and the closing of Abrams Drive (south).
- Install revised striping and transition traffic near Imjin Road to the south roadbed and re-open Imjin Road to right-in/right-out traffic movements (scheduled for the night of 5/29).
- Close Abrams Drive (south) - grind and remove existing pavement, resume earthwork/grading, and begin installation of underground facilities (e.g. streetlight electrical conduit, fiber optic conduit, and irrigation piping).
- Construct new curb, sidewalk and ADA ramps at south east corner of Imjin Parkway/Reservation Road.
- Continue environmental monitoring of contractor activities job wide.

**Night Shift** – Imjin Parkway will be closed from California Avenue to Reservation Road from 7:00 PM to 6:00 AM the night of 5/29. Detours will be set up at Reservation Road and California Avenue. Emergency vehicle access will be available at all times.

This closure is necessary to perform work required to shift traffic at:

- Abrams Drive – the north side will re-open to right in/right out traffic. Beginning 5/30, Abrams Drive (south) will be closed to all traffic to construct the new roadway and the south ½ of the roundabout. The completion of Abrams Drive (south) is expected in early August.
- Imjin Road – the roadway will re-open to right in/right out traffic and traffic on Imjin Parkway will be shifted from the north side of the roundabout to the newly constructed south side (the side closest to Imjin Road) of the roundabout.



## IMJIN PARKWAY WIDENING & ROUNDABOUT PROJECT

Night work activities will include moving concrete barriers, striping removal and new striping for revised traffic flows. The impacts will be noise from equipment used to relocate concrete barriers and large equipment used for striping. Portable light plants will be utilized to provide adequate lighting for operations on the roadway. Every effort will be made to avoid light impacts for adjacent residences.

### Activities That Took Place Last Week (May 19 – May 23)

- Formed and placed concrete for sidewalks at Abrams Drive (north). Sidewalks are complete except for the excluded/fenced environmentally sensitive area (for the *Monterey gilia*).
- Continued installing materials for bio-swales at/near Imjin Road.
- Resumed installing irrigation lines and formed curb sections for Preston Drive roundabout (south side).
- Installed street light foundations and poles in Imjin Parkway median between Abrams Drive and Imjin Road.
- Paved bike path sections at Preston Drive (south side), Abrams Drive, and Imjin Road.
- Removed existing pavement, formed and placed concrete for Shell Station driveway (Imjin Parkway entrance).
- Constructed drainage structure between Army Reserve driveway and Reservation Road.
- Removed existing concrete curb/sidewalk and graded for new curb & gutter, sidewalk, and ADA ramps at the southeast corner of Imjin Parkway/Reservation Road.

### Future Construction Activity and Information: What's Planned in the Future?

- Complete all earthwork (cuts & fills) by end of June.
- Re-open Abrams Drive (south) in August.

### PROGRESS PHOTOS



Installing median street light pole



Forming curb for Preston Drive 1/2 roundabout (south side)



## IMJIN PARKWAY WIDENING & ROUNDABOUT PROJECT

### PROGRESS PHOTOS



Paving bike path approaching Preston Drive roundabout



Paving bike path approaching Abrams Drive roundabout



Grinding out existing asphalt driveway at Shell station to make way for new driveway construction



Installing drainage facility near Reservation Road

### How to Stay Informed

- Please visit the project website at [www.imjinparkway.com](http://www.imjinparkway.com) or contact Edrie De Los Santos (City of Marina) at 831.884.1212

**Thank you for your patience and for observing safety speed limits!**

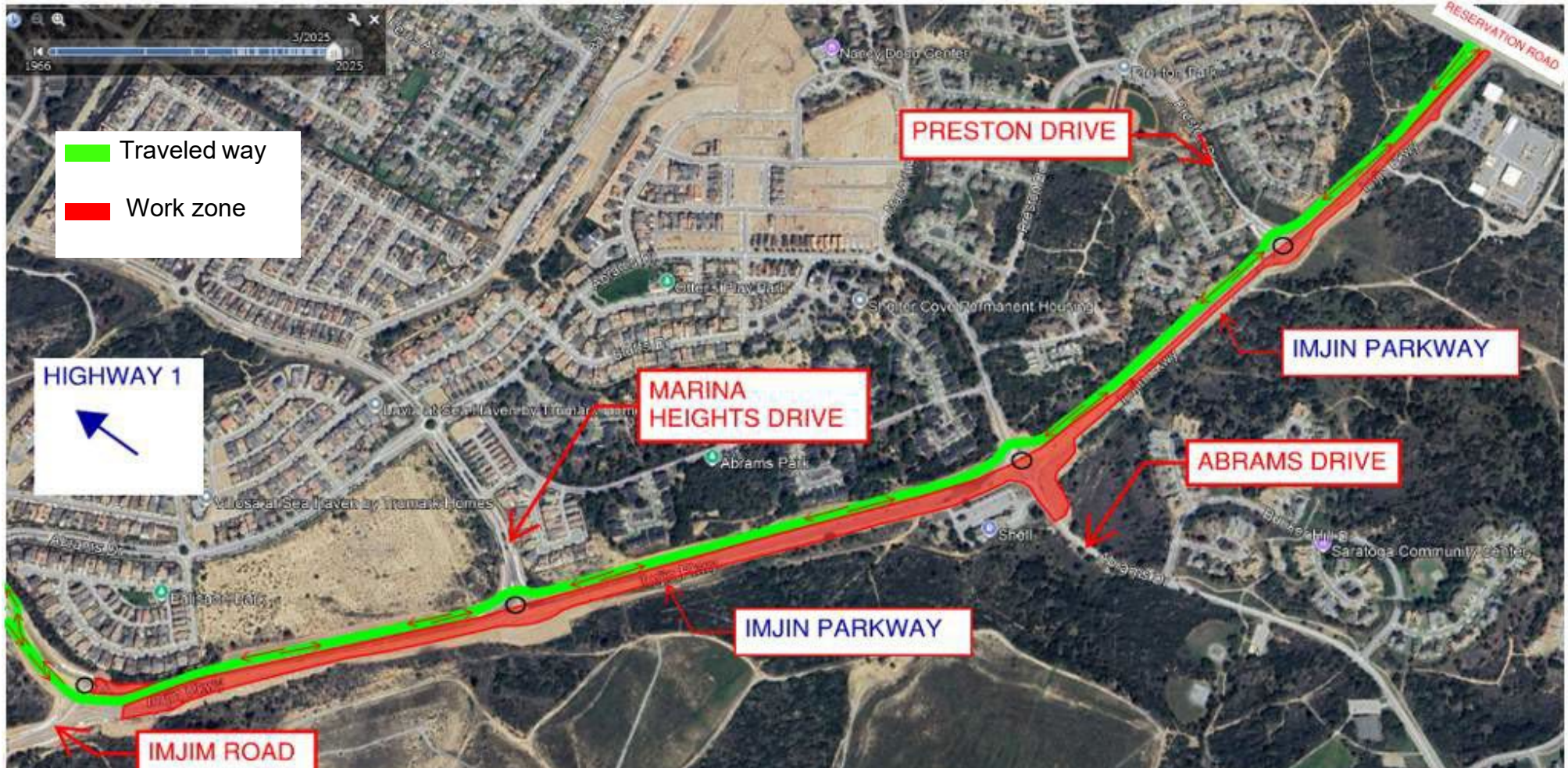


# REMINDER!



## IMJIN PARKWAY WIDENING & ROUNDABOUT PROJECT

### 5/30/2025 IMJIN PARKWAY TRAFFIC SHIFT



**NIGHT WORK on 5/29/2025** - Imjin Parkway will be closed from California Avenue to Reservation Road. The closure will be from 7:00 PM to 6:00 AM. Detours will be in place at Reservation Road and California Avenue.

When Imjin Parkway re-opens on 5/30, **Abrams Drive (south) will be closed to all vehicles at Imjin Parkway**, Abrams Drive (north) will re-open to right-in/right-out traffic, and Imjin Road will re-open to right-in/right-out traffic. The closure of Abrams Drive (south) is expected to last from 5/30 through 7/31.

**FIRST RESPONDERS - THE CLOSURE ON 5/29 WILL BE A SOFT CLOSURE**