



IMJIN PARKWAY WIDENING & ROUNDABOUT PROJECT

Construction Activities Update

November 18 – November 29, 2024

PLEASE BE ALERT! Traffic control is in place for your safety!

The enforceable speed limit through the construction zone is 25 MPH.

- ❖ **Night work is scheduled for November 21 – Imjin Parkway will be closed from Imjin Road to Reservation Road from 8:00 PM to 6:00 AM**
-

What's Happening in the Next 2 Weeks (November 18 – November 29)

Day Shift

- Re-open Preston Drive and close Marina Heights Drive.
- Continue installing streetlight & fiber optic conduit, and irrigation service lines between Marina Heights Drive and Imjin Road.
- Continue Phase 1 drainage facilities for Bio swale improvements.
- Continue grading and installation of base material for Phase 1 roadway between Marina Heights Drive and Imjin Road.
- Prep and spray hydroseeding material on slopes between Reservation Road and Preston Drive (including areas along Preston Drive), and between Abrams Drive and Marina Heights Drive.
- Continue forming curbs, gutter, and sidewalk at Marina Heights Drive and Imjin Road.
- Continue environmental monitoring of contractor activities job wide.

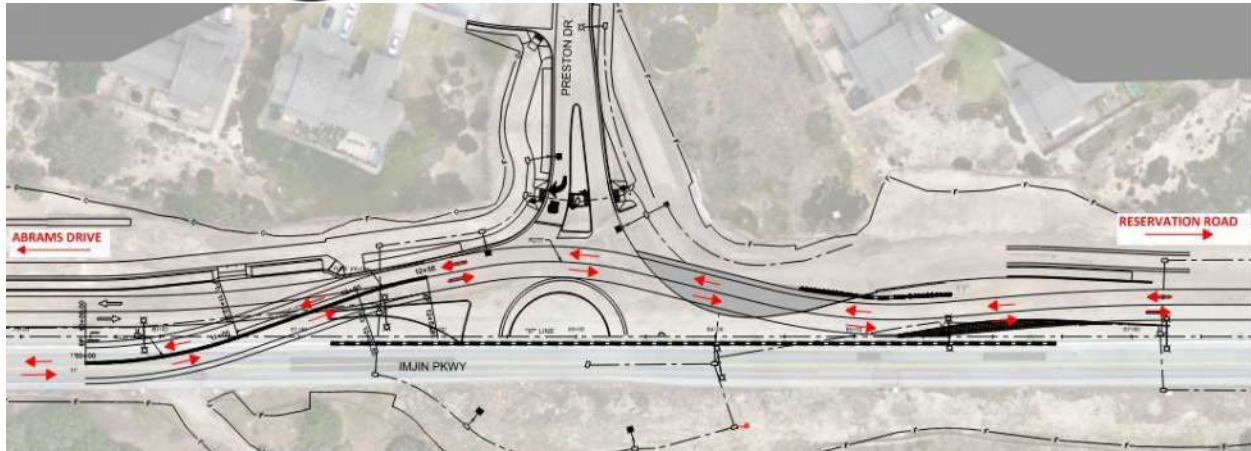
Night Shift – November 21, 2024

- Night work is scheduled for 1 night the on November 21st. The hours of work will be **8:00PM – 6:00AM. Abrams Drive will remain open.** The work will involve relocating existing concrete barrier rail sections [using trucks and small lift equipment], and striping for the new traffic lanes. The contractor will need to have lighting for the operations but will make every effort to aim lighting away from residences. This work will move traffic from/to Reservation Road to the new roadway section on Imjin Parkway between Reservation Road and Preston Drive. This will also re-open Preston Drive and the transition segment west of Preston Drive that will move traffic back to the existing traffic lanes before the signal at Abrams. In addition, Marina Heights Drive will close to all vehicles at Imjin Parkway. This closure will allow for the construction of half of the new roundabout and the adjacent roadway segments at Marina Heights Drive.

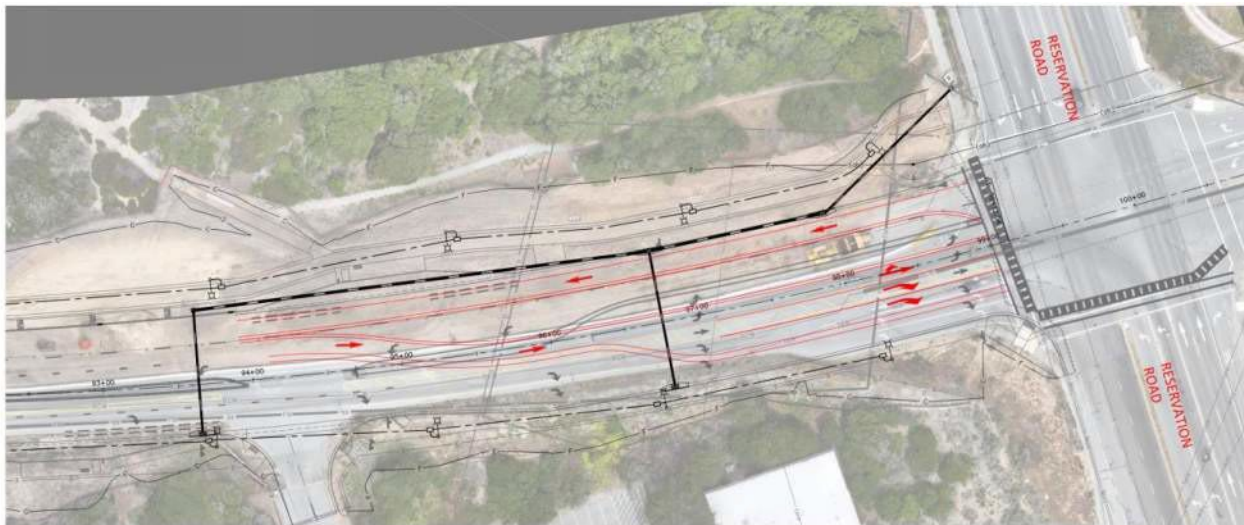
Be alert for new lane configurations on Imjin Parkway between Reservation Road and the transition segment west of Preston Drive



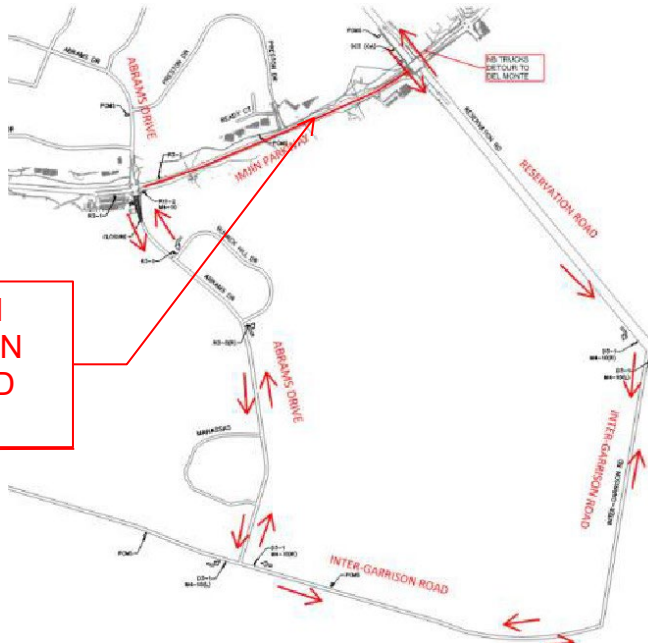
IMJIN PARKWAY WIDENING & ROUNDABOUT PROJECT



Coming 11/22 – re-opening of Preston Drive



Coming 11/22 - new traffic configuration



NO TRUCKS OVER 45' ON
IMJIN PARKWAY BETWEEN
RESERVATION ROAD AND
ABRAMS DRIVE

Truck (exceeding 45') detour



IMJIN PARKWAY WIDENING & ROUNDABOUT PROJECT

Activities That Took Place during the Week of November 11 – November 15

- Continued earthwork, grading, and placing of base rock material for Phase 1 roadway section Marina Heights Drive and Imjin Road.
- Continued concrete work at Marina Heights Drive
- Continued installing streetlight & fiber optic conduit, and irrigation service lines between Marina Heights Drive and Imjin Road.
- Completed installation of storm drains and water service line [servicing Army Reserve and Chapin's yard] crossing Imjin Parkway.
- Completed installing street light poles for lighting between Reservation Road and Preston Drive.
- Continued construction of Phase 1 drainage facilities for Bio Swale improvements to control storm water runoff.
- Installed storm drain crossing Abrams Drive (north leg).
- Worked on installation of erosion control measures between Reservation Road and Marina Heights Drive.
- Continued earthwork at retaining wall near Abrams Drive.

Future Construction Activity and Information: What's Planned in the Future?

- Construction of ½ roundabout and adjacent roadway at Marina Heights Drive.
- Remaining roadway paving between Abrams Drive and Marina Heights Drive.
- Paving of bike/pedestrian path between Abrams Drive and Marina Heights Drive.
- Roadway paving between Marina Heights Drive and job limit west of Imjin Road.

PROGRESS PHOTOS



STRAW WADDLES INSTALLED ON SLOPES TO
PREVENT EROSION IN RAIN EVENTS



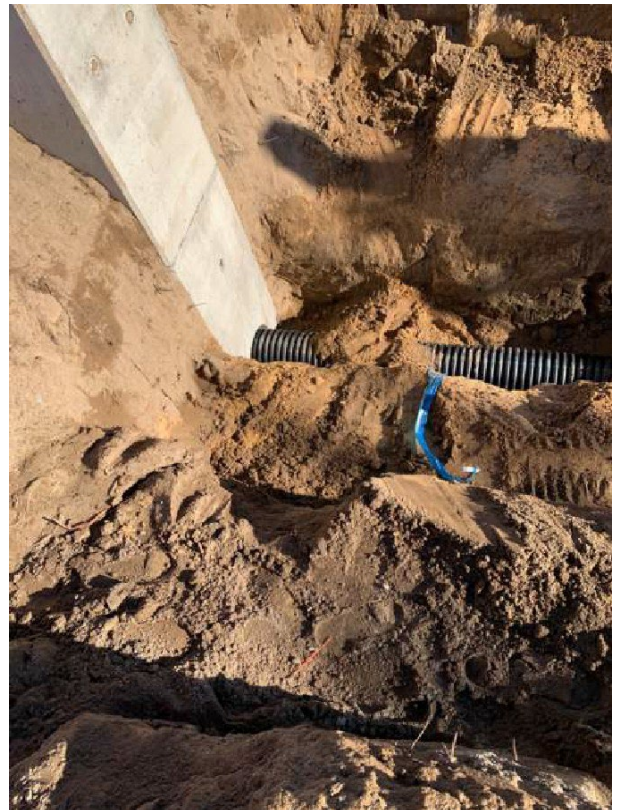
DAY WORK INSTALLING STORM DRAIN CROSSING
IMJIN PARKWAY NEAR ABRAMS DRIVE



IMJIN PARKWAY WIDENING & ROUNDABOUT PROJECT



NIGHT WORK INSTALLING WATER SERVICE CROSSING IMJIN PARKWAY FOR ARMY RESERVE & CHAPIN YARD



DAY WORK & NIGHT WORK INSTALLING STORM DRAIN CROSSING UNDER IMJIN PARKWAY AT THE RETAINING WALL NEAR ABRAMS DRIVE

How to Stay Informed

- Please visit the project website at www.imjinparkway.com or contact Edrie De Los Santos (City of Marina) at 831.884.1212

Thank you for your patience and for observing safety speed limits!