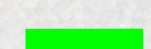
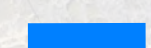
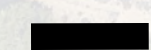
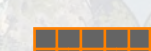
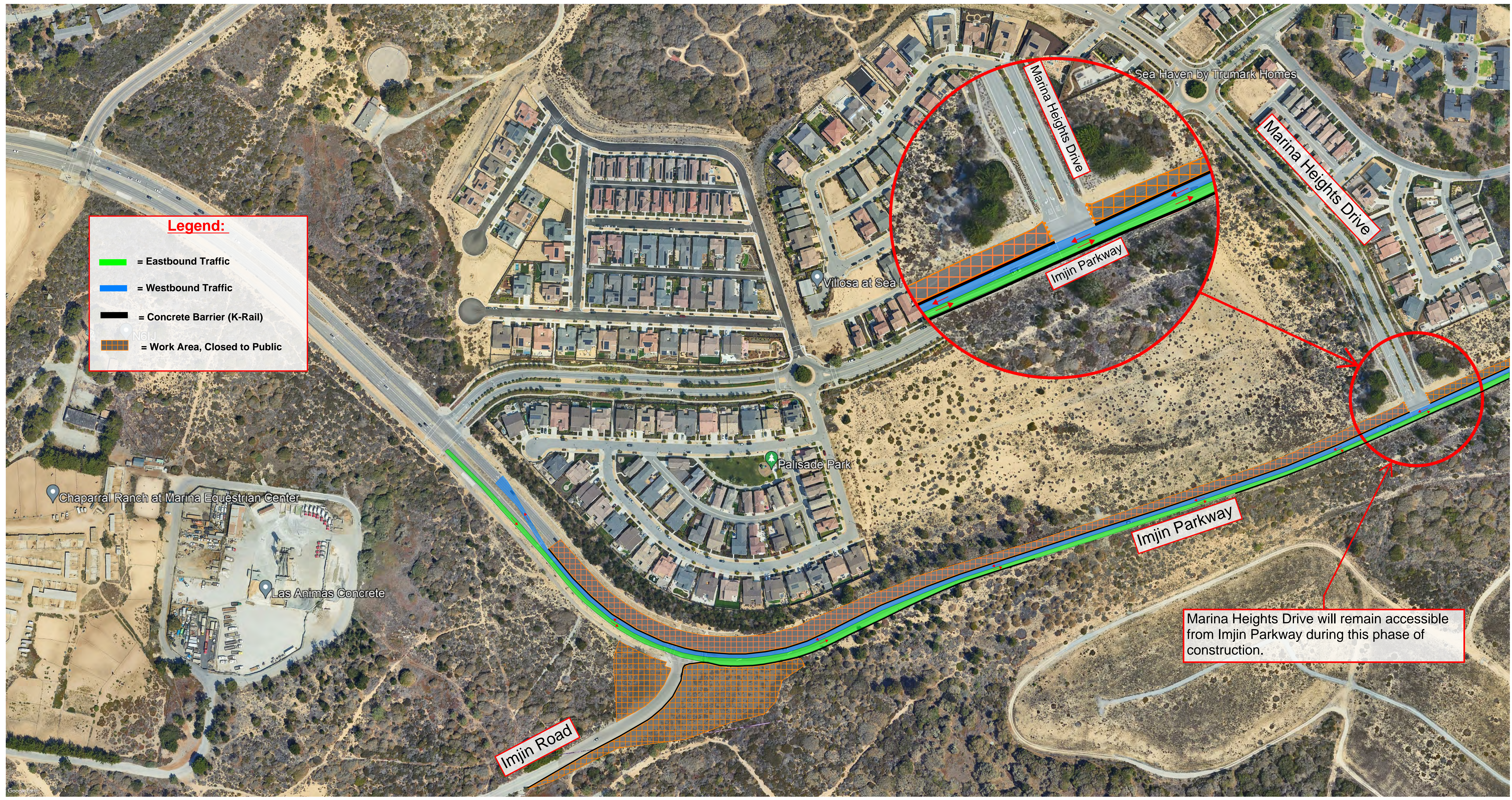
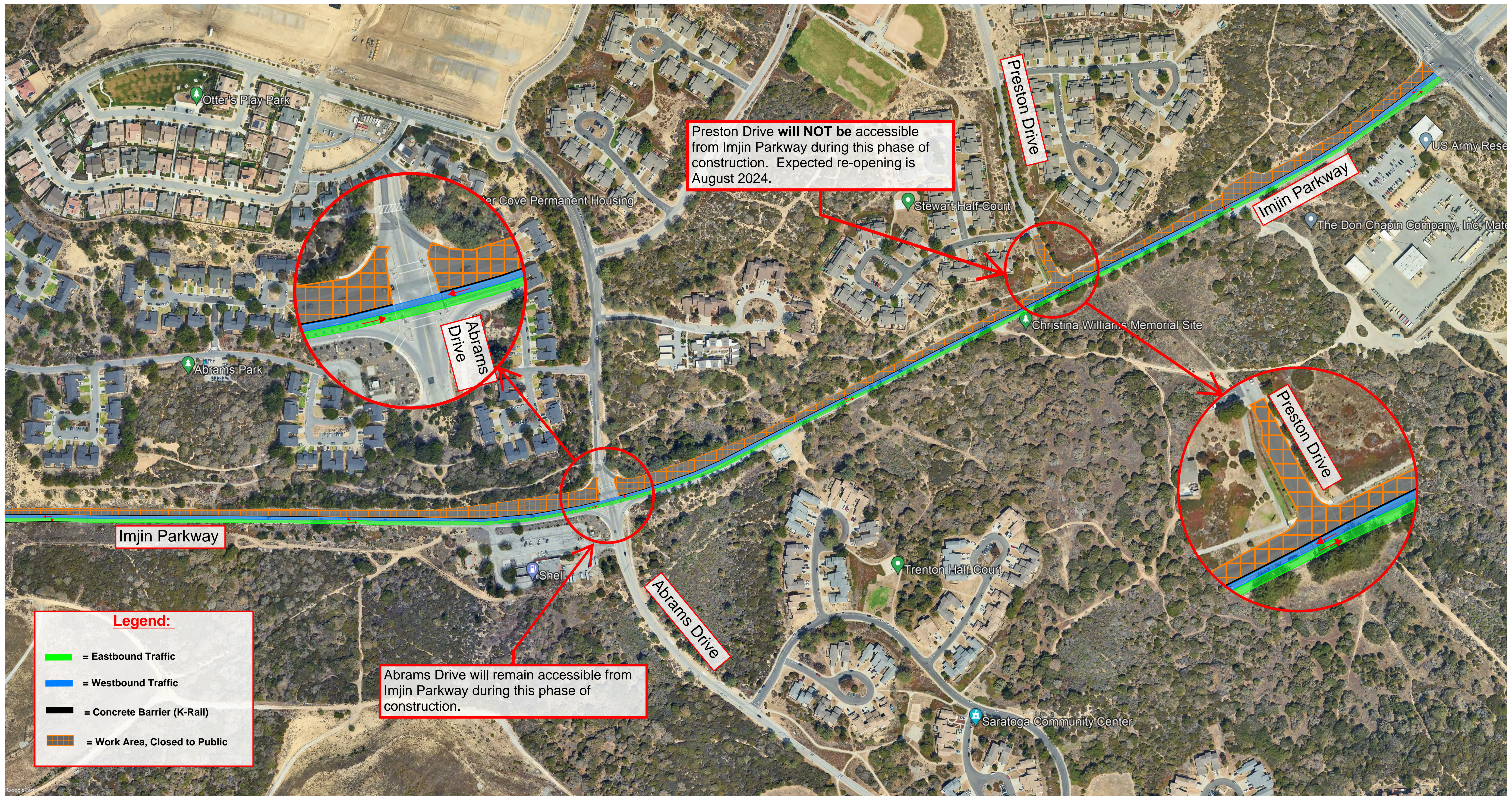


Legend:

-  = Eastbound Traffic
-  = Westbound Traffic
-  = Concrete Barrier (K-Rail)
-  = Work Area, Closed to Public



Marina Heights Drive will remain accessible from Imjin Parkway during this phase of construction.



Preston Drive **will NOT** be accessible from Imjin Parkway during this phase of construction. Expected re-opening is August 2024.

Abrams Drive will remain accessible from Imjin Parkway during this phase of construction.

Legend:

- █ = Eastbound Traffic
- █ = Westbound Traffic
- = Concrete Barrier (K-Rail)
- = Work Area, Closed to Public

Otter's Play Park

er Cove Permanent Housing

Preston Drive

Imjin Parkway

US Army Rese

The Don Chapin Company, Inc. Mat

Stewart Half Court

Abrams Drive

Christina Williams Memorial Site

Abrams Park

Preston Drive

Imjin Parkway

Shell

Abrams Drive

Trenton Half Court

Saratoga Community Center