



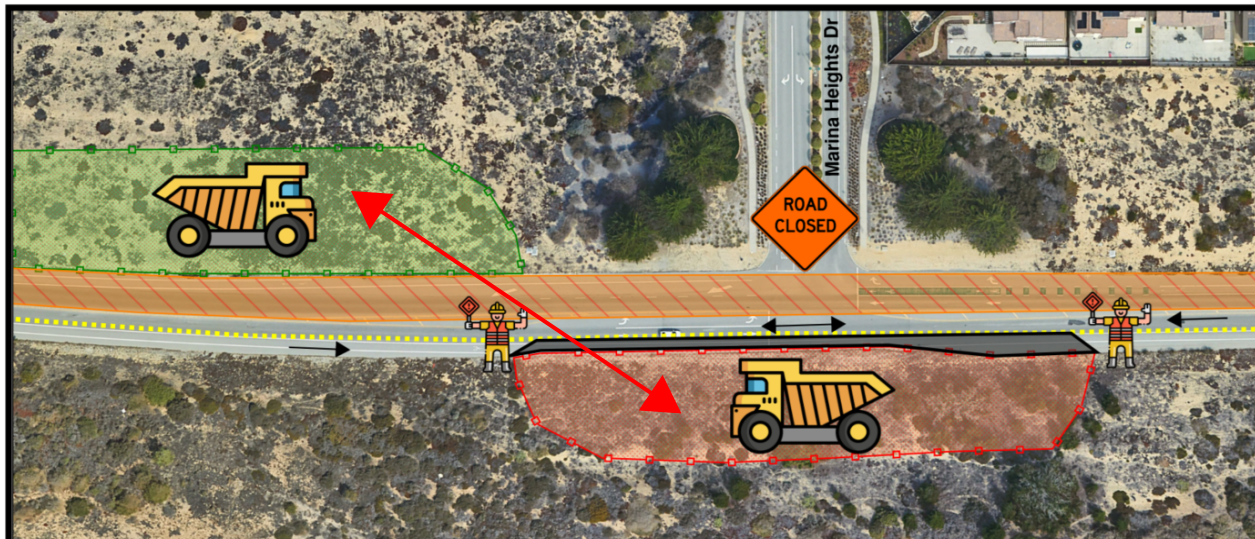
IMJIN PARKWAY WIDENING & ROUNDABOUT PROJECT

NOTICE!

Beginning 5/13/2024 thru 5/24/2024, Marina Heights Drive will be closed at Imjin Parkway from 9:00AM to 3:30PM. The road will re-open during non-working hours (after 3:30PM and before 9:00AM and on weekends).

In addition, there will be flaggers **AND A TEMPORARY SIGNAL** at Imjin Pkwy/Marina Heights stopping traffic to allow the contractor to safely move trucks across Imjin Parkway for their earthwork operations .

The Marina Heights Drive closure will be a "soft" closure so emergency vehicles will have access at all times.



Traffic Control Notes

Operation: Moving Dirt from South Imjin to North Side
Hours of Closure: 9:00 AM to 3:30PM
Duration: 5/13/2024 thru 5/24/2024



PUBLIC WORKS DEPARTMENT
CITY OF MARINA
211 HILLCREST AVENUE
MARINA, CALIFORNIA 93933

PH: (831) 884-1212
FAX: (831) 384-0425



IMJIN PKWY WIDENING & ROUNDABOUT PROJECT
Temporary Lane Closure (Soft Closure)

CIP EDR1808

SCALE: NONE

Exhibit
A

05/09/24